

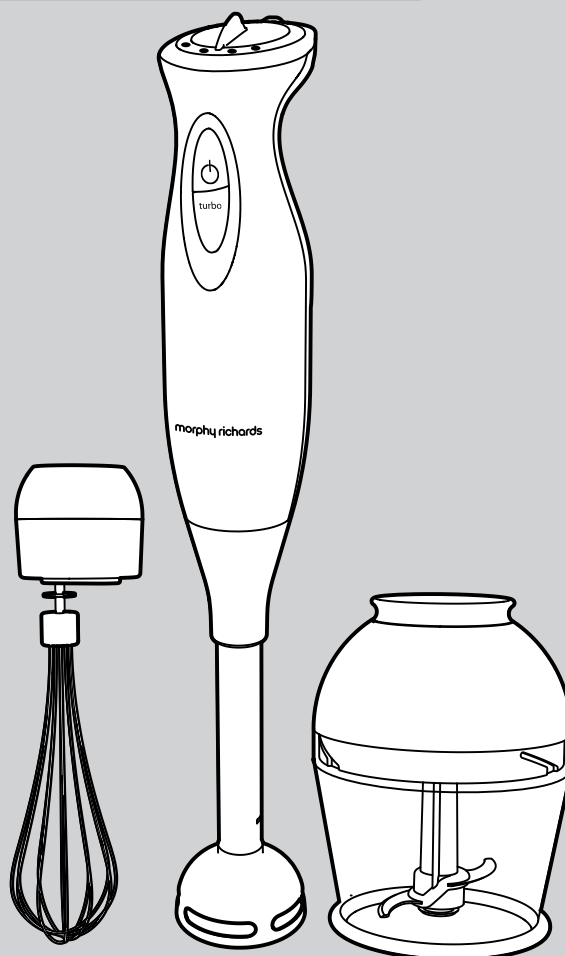
FP48924 MUK Rev 1

**morphy richards®**



# Accents Hand Blender Set

Please read and keep these instructions for future use



**48924**

For competitions, product hints and tips and more join us at



[www.morphyrichards.co.uk/blog](http://www.morphyrichards.co.uk/blog)



[www.facebook.com/morphyrichardsuk](http://www.facebook.com/morphyrichardsuk)

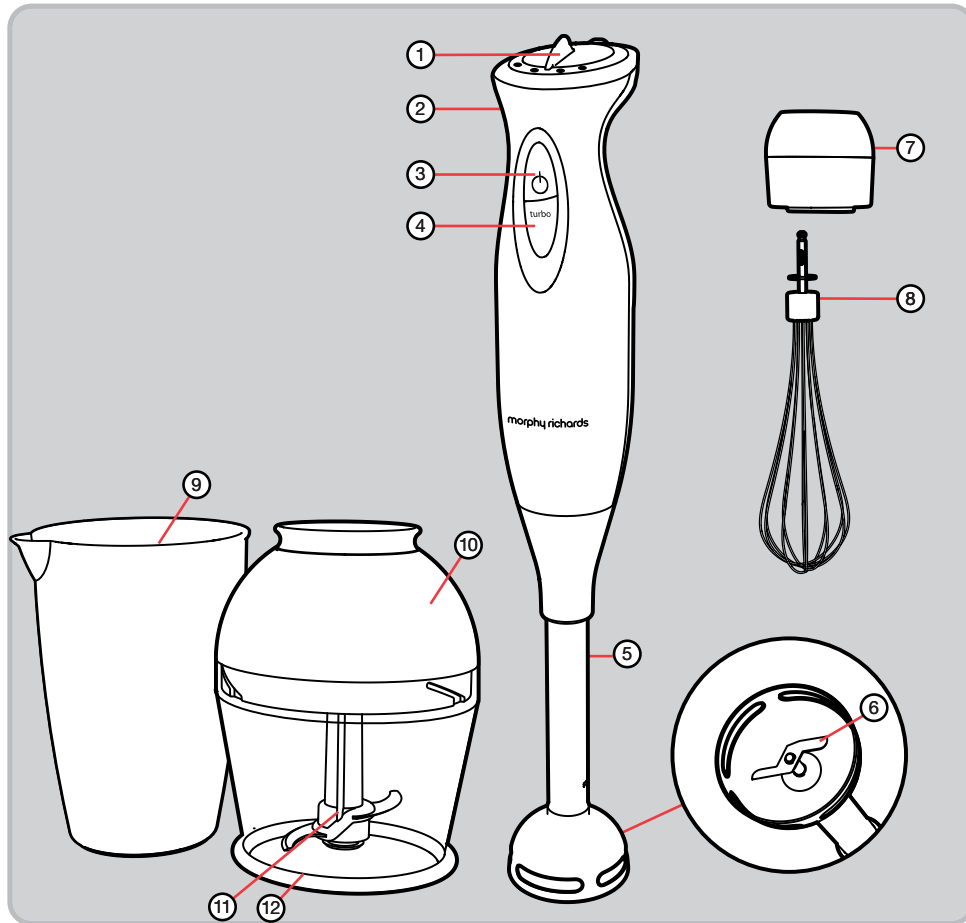


[www.twitter.com/loveyourmorphy](http://www.twitter.com/loveyourmorphy)

**[www.morphyrichards.com](http://www.morphyrichards.com)**

\* Register online for your 2 year guarantee. See the back of this instruction book for details. (UK and Ireland customers only)

## Product overview



## Features

- |                        |                     |
|------------------------|---------------------|
| (1) Speed Control      | (11) Chopping Blade |
| (2) Main Unit          | (12) Chopping Bowl  |
| (3) On Button          |                     |
| (4) Turbo Button       |                     |
| (5) Blending Leg       |                     |
| (6) Blade              |                     |
| (7) Whisk Gearbox      |                     |
| (8) Balloon Whisk      |                     |
| (9) Beaker             |                     |
| (10) Chopping Bowl Lid |                     |

## Introduction

Thank you for your recent purchase of this Morphy Richards Hand Blender Set.

The hand blender set comes with a number of attachments and a 'quick twist' connection mechanism for safety.

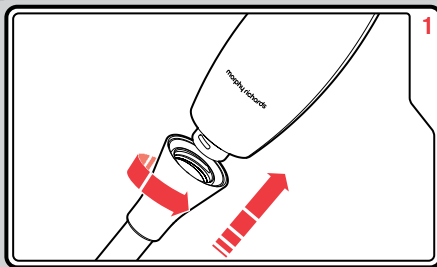
Please read the instructions for information on how to use each attachment thoroughly before use.

Remember to visit [www.morphyrichards.co.uk](http://www.morphyrichards.co.uk) to register your product's two year guarantee.

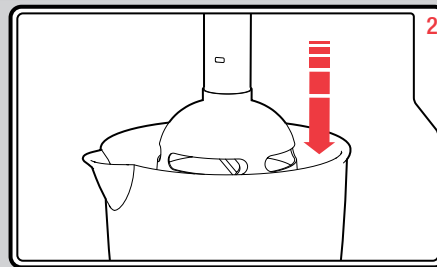
## Before first use

- Wash the Blending Leg (5), Beaker (9), Balloon Whisk (8), Chopping Blade (11) and Chopping Bowl (12) in hot soapy water. Dry thoroughly before use.
- Do not immerse the Main Unit (2) Whisk Gearbox (7) or Chopping Bowl Lid (10) in water.  
No parts are dishwasher safe.
- **WARNING: Carefully unpack your hand blender as the blades are very sharp.**

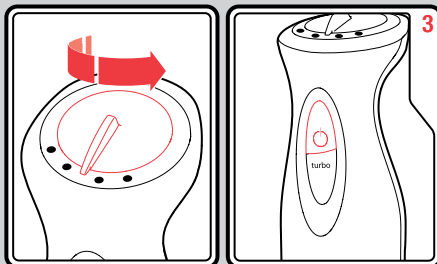
## Using your hand blender



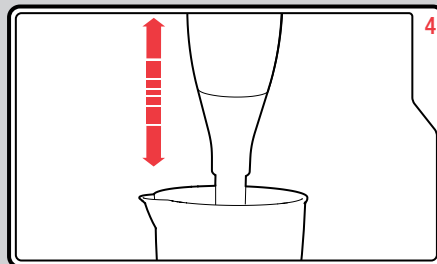
Insert the Main Unit (2) into the Blending Leg (5) and twist to secure into place.



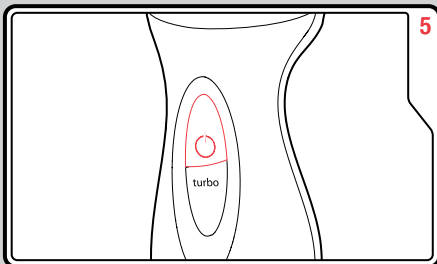
Place the Blending Leg into the food to be blended. We recommend using the Beaker (9) for the best results.



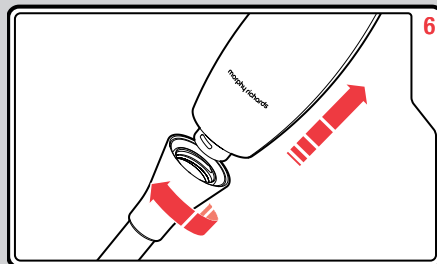
Select the speed on the Speed Control (1). Hold the beaker steady in your other hand and press and hold the On Button (3) to start.



Move the Blade (6) through the food using an up and down motion.



Release the On Button to stop blending **BEFORE** removing from the food



Twist the Blending Leg (5) to remove from the Main Unit for cleaning. Rinse under running water.

## Blending in a saucepan

1. Remove the saucepan from the heat.
  2. To avoid excessive splashing, place the Blending Leg (5) into the food before switching the Hand Blender on.
  3. Hold the pan steady with your other hand and press the On Button (3). Use a low speed setting to start and increase the speed as needed.
  4. Move the Blade (6) through the food using a up and down motion.
  5. Allow the Blade to stop moving before removing from the pan.
- **WARNING:** Lifting the Blade out of the food while running, or using a high speed setting in a small pan could splash hot liquid. Extra care should be taken when using the Hand Blender in this manner.
  - Do not insert the hand blender into the food past the join between the Main Unit (2) and the Blending Leg (5).

- Ensure the power cable does not touch any hot surfaces (including the side of the pan.)

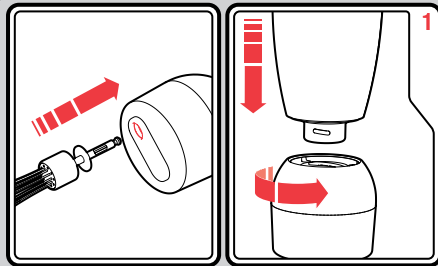
## Turbo Button

- The hand blender has 8 different speeds as well as a Turbo Button (4). Press the Turbo Button to run the hand blender on speed 8 for intermittent bursts.
- Note: The Chopping Bowl (12) attachment can only be used with the Speed Control (1) set to the highest setting or when using the Turbo Button (4). Using on a lower setting may cause irreparable damage to the Hand Blender.

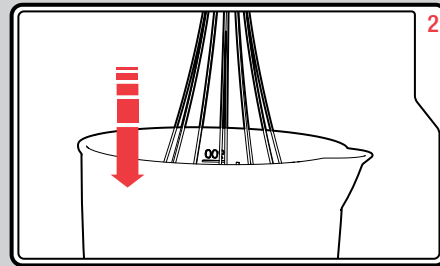
## Usage

- **WARNING:** Your hand blender set is designed for intermittent use. Do not use continuously for more than 1 minute. Allow to cool down for a minimum of 5 minutes before further use.
- Do not use continuously for more than 10 seconds when lifted out of food.

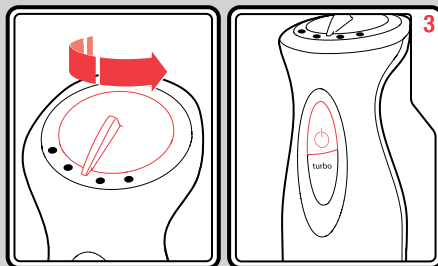
## Using the Balloon Whisk



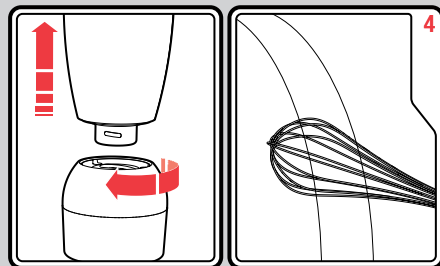
Insert the Balloon Whisk (8) into the Whisk Gearbox (7). Attach the whisk onto the Main Unit (2).



Place the Balloon Whisk into the ingredients.

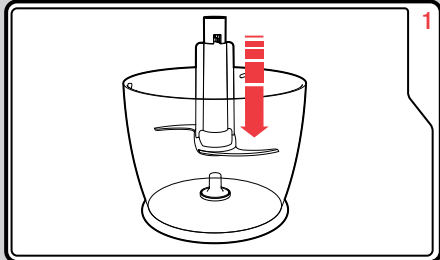


To avoid splashing, select a slow speed on the Speed Control (1) and press and hold the On Button (3) to start. Release the button to stop BEFORE removing the Balloon Whisk from the food.

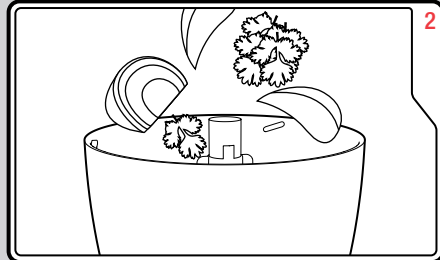


Unplug from the mains before twisting the Whisk Gearbox (7) to unlock from the Main Unit (2). Pull the Balloon Whisk from the Whisk Gearbox for cleaning.

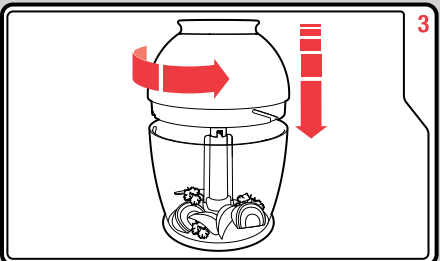
**Using the Chopping bowl**



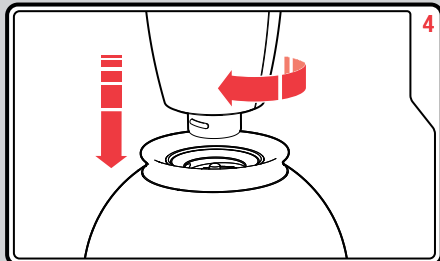
**CAREFULLY** Insert the Chopping Blade (11) into the Chopping Bowl (12).



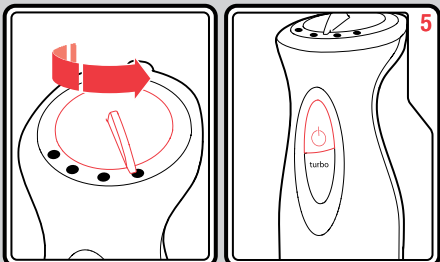
Place the food you wish to chop into the Chopping Bowl. (Please refer to the maximum quantities table on page 6)



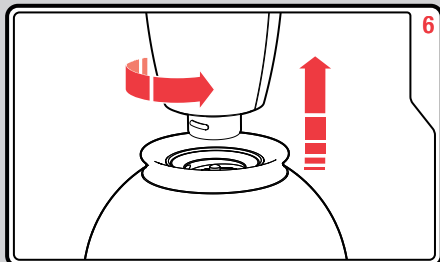
Place the Chopping Bowl Lid (10) on the Chopping Bowl. Twist to secure into place.



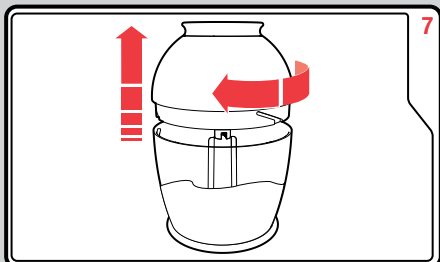
Attach the Main Unit (2) to the Chopping Bowl Lid, twist to secure into place.



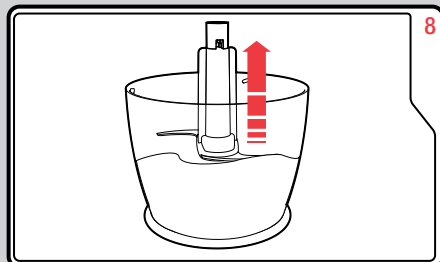
Select the maximum speed on the Speed Control (1) and press and hold the On Button (3) to start. Do not open the Lid while in use.



Unplug from the mains before twisting the Main Unit to detach from the Chopping Bowl Lid.



Remove the Chopping Bowl Lid from the Chopping Bowl.



**CAREFULLY** remove the Chopping Blade before emptying the food from the Chopping Bowl.

## Maximum quantities for use in the Chopping Bowl (12)

- The amounts listed below should be used as a guide. The Chopping Bowl (12) should not be filled more than half full.

Ingredients	Maximum Quantity	Time
Onions	• 200g	• 3-8 seconds
Carrots	• 100g	• 5-15 seconds
Basil	• 50g	• 7-12 seconds
Meat (fat free)	• 100g	• 7-13 seconds
Peanuts	• 100g	• 5-15 seconds

occur.

## Suitable foods

### Blending Leg (5)

- The Blending Leg is designed for pureeing soft foods for use in soups and baby food.
- The Blending Leg is not suitable for grinding hard items such as coffee beans, ice, nuts, meat or hard vegetables (raw potatoes, raw carrots etc).

### Balloon Whisk (8)

- The Balloon Whisk is ideal for whipping cream, eggs and other soft foods. It should be used at low speeds to avoid splashing.
- It is not suitable for stiffer mixtures such as cake batter.

### Chopping Bowl (12)

- The Chopper is suitable for chopping nuts, herbs, boiled eggs and dried bread. The chopping bowl should be used on maximum speed only.
- The Chopper is not suitable for grinding coffee beans, ice or hard vegetables (raw potatoes, raw carrots etc).

## Top tips

- When blending foods with strong colour (eg. cooked carrots), the plastic parts of the appliance may become discoloured. Wipe with cooking oil to clean any discoloured parts.
- When blending using the Blending Leg (5), start the process by plunging the blender into the ingredients. This will ensure all the ingredients are pulled into the blade to be processed. Continue this movement until the mixture is to the desired consistency.
- Do not lift the Blending Leg out of the mixture completely when running, as splashing may

## Care and cleaning

- WARNING:** Always unplug the appliance from the mains socket before cleaning and maintenance.

**WARNING:** Handle the blades with care as they are sharp.

Wash the Blending Leg (5) Beaker (9), Balloon Whisk (8), Chopping Blade (11) and Chopping Bowl (12) thoroughly in hot soapy water. Dry completely before reusing.

Clean the Main Unit (2) Whisk Gearbox (7) or Chopping Bowl Lid (10) with a damp cloth and dry all the parts thoroughly.

**WARNING:** Never immerse the Main Unit, Whisk Gearbox or Lid in water or any other liquid.

No parts are dishwasher safe.

## Contact us

### Helpline

If you are having a problem with your appliance, please call our Helpline, as we are more likely to be able to help than the store you purchased the item from.

Please have the product name, model number and serial number to hand when you call to help us deal with your enquiry quicker.

UK Helpline: 0844 871 0960

IRE Helpline: 1800 409 119

Spares: 0844 873 0726

### Talk To Us

If you have any questions or comments, or want some great tips or recipe ideas to help you get the most out of your products, join us online:

Blog: [www.morphyrichards.co.uk/blog](http://www.morphyrichards.co.uk/blog)

Facebook: [www.facebook.com/morphyrichardsuk](http://www.facebook.com/morphyrichardsuk)

## Health and Safety

The use of any electrical appliance requires the following common sense safety rules.

Primarily there is danger of injury or death and secondly the danger of damage to the appliance. These are indicated in the text by the following two conventions:

**WARNING: Danger to the person!**

**IMPORTANT: Damage to the appliance!**

In addition, we offer the following safety advice.

### Location

- This appliance is intended to be used in household and similar applications such as:  
farm houses;  
by clients in hotels, motels and other residential type environments;  
bed and breakfast type environments.  
It is not suitable for use in staff kitchen areas in shops, offices and other working environments.
- Do not use outdoors or in a bathroom.
- Always locate your appliance away from the edge of the worktop.
- Do not place a bowl when used with the appliance on a highly polished wooden surface as damage may occur to the surface.
- Do not place the appliance on or near a hot surface, such as a hot plate or radiant rings or near a naked flame.

### Mains cable

- Do not let the mains cable hang over the edge of the worktop where a child could reach it.
- Do not let the lead run across an open space e.g. between a low socket and a table.
- Do not let the cable run across a cooker or other hot area which might damage the cable.
- The mains cable should reach from the socket to the base unit without straining the connections.
- The power cord cannot be replaced. Contact Morphy Richards for advice.

### Personal safety

- Avoid touching moving parts. Keep hands, hair and clothing, and utensils away from the hand mixer attachment blades during operation, to prevent personal injury and/or damage to the appliance.
- **WARNING:** To protect against the risk of electric shock, NEVER immerse the appliance body in water or in any other liquid and always ensure the electrical connections are kept dry.
- This appliance is not intended for use by persons (including children) with reduced physical, sensory or mental capabilities, or lack of experience and knowledge, unless they have been given supervision or instruction concerning the use of the appliance by a person responsible for their safety.

### Children

- Children do not understand the dangers associated with operating electrical appliances. Never allow children to use this appliance.
- Children should be supervised to ensure that they do not play with the appliance.
- Teach children to be aware of dangers in the kitchen, warn them of the dangers of reaching up to areas where they cannot see properly or should not be reaching.

### Other safety considerations

- Do not operate any appliance with a damaged cord or plug or after the appliance malfunctions or has been damaged in any manner.
- The use of attachments or tools not recommended or sold by Morphy Richards may cause fire, electric shock or injury.
- Do not use the appliance for anything other than its intended purpose.
- Unplug from the outlet when not in use, or when left unattended, and before assembling, disassembling or cleaning.

### Product specific safety

- **WARNING:** The blender blades are very sharp. Handle with care when using and cleaning.
- **WARNING:** To protect against fire, electric shock and personal injury, do not immerse the cord, plug or mixer in water or other liquid.
- Do not clean the attachments under running water while they are in position.
- Make sure the blender is switched off before connecting to or disconnecting from the mains supply and when left unattended.

### Electrical requirements

Check that the voltage on the rating plate of your appliance corresponds with your house electricity supply which must be A.C. (Alternating Current).

If the socket outlets in your home are not suitable for the plug supplied with this appliance, the plug should be removed and the appropriate one fitted.

**WARNING :** The plug removed from the mains lead, if severed, must be destroyed, as a plug with a bared flexible cord is hazardous if engaged into a live socket outlet.

Should the fuse in the mains plug require changing, a 3 amp BS1362 fuse must be fitted.

FP48924 MUK Rev 1 04/12

## Registering your 2 year guarantee

Your standard one year guarantee is extended for an additional 12 months when you register the product within 28 days of purchase with Morphy Richards. If you do not register the product with Morphy Richards within 28 days, your product is guaranteed for 1 year. To validate your 2 year guarantee register with us online at

[www.morphyrichards.co.uk](http://www.morphyrichards.co.uk)

Or call our customer registration line

**UK 0844 871 0962**

**IRE 1800 409 119**

N.B. Each qualifying product needs to be registered with Morphy Richards individually.

Please note that the 2 year guarantee is only available in the UK and Ireland. Please refer to the one year guarantee for more information.

## Your 1 year guarantee

It is important to retain the retailer's receipt as proof of purchase. Staple your receipt to this back cover for future reference.

Please quote the following information if the product develops a fault. These numbers can be found on the base of the product.

Model no.

Serial no.

All Morphy Richards products are individually tested before leaving the factory. In the unlikely event of any appliance proving to be faulty within 28 days of purchase, it should be returned to the place of purchase for it to be replaced.

If the fault develops after 28 days and within 12 months of original purchase, you should contact the Helpline number quoting Model number and Serial number on the product, or write to Morphy Richards at the address shown.

You may be asked to return a copy of proof of purchase.

Subject to the exclusions set out below (see Exclusions), the faulty appliance will then be repaired or replaced as appropriate and dispatched usually within 7 working days of receipt.

If, for any reason, this item is replaced or repaired during the 1 year guarantee period, the guarantee on the new item will be calculated from original purchase date. Therefore it is vital to retain your original till receipt or invoice to indicate the date of initial purchase.

To qualify for the 1 year guarantee, the appliance must have been used according to the instructions supplied. For example, crumb trays should have been emptied regularly.

## Exclusions

Morphy Richards shall not be liable to replace or repair the goods under the terms of the guarantee where:

- 1 The fault has been caused or is attributable to accidental use, misuse, negligent use or used contrary to the manufacturer's recommendations or where the fault has been caused by power surges or damage caused in transit.
  - 2 The appliance has been used on a voltage supply other than that stamped on the products.
  - 3 Repairs have been attempted by persons other than our service staff (or authorised dealer).
  - 4 The appliance has been used for hire purposes or non domestic use.
  - 5 The appliance is second hand.
  - 6 Morphy Richards reserves the right not to carry out any type of servicing under the guarantee at its discretion
  - 7 Plastic filters for all Morphy Richards kettles and coffee makers are not covered by the guarantee.
  - 8 Batteries and damage from leakage are not covered by the guarantee.
- This guarantee does not confer any rights other than those expressly set out above and does not cover any claims for consequential loss or damage. This guarantee is offered as an additional benefit and does not affect your statutory rights as a consumer. Morphy Richards products are intended for household use only. See usage limitations within the location safety instructions.

## Disclaimer

Morphy Richards has a policy of continuous improvement in product quality and design. The company, therefore reserves the right to change the specification of its models at any time.



For electrical products sold within the European Community. At the end of the electrical products useful life, it should not be disposed of with household waste.

Please recycle where facilities exist. Check with your Local Authority or retailer for recycling advice in your country

**IF YOU ARE HAVING A PROBLEM  
WITH ONE OF OUR PRODUCTS, CALL  
OUR HELPLINE:**

**UK: 0844 871 0960  
EIRE: 1800 409 119  
SPARES: 0844 873 0726**

**morphyrichards**

The After Sales Division  
Morphy Richards Ltd  
Mexborough, South Yorkshire,  
England, S64 8AJ

Helplines (office hours)  
UK 0844 871 0960  
Spare Parts 0844 873 0726  
Republic of Ireland 1800 409 119  
[www.morphyrichards.com](http://www.morphyrichards.com)

